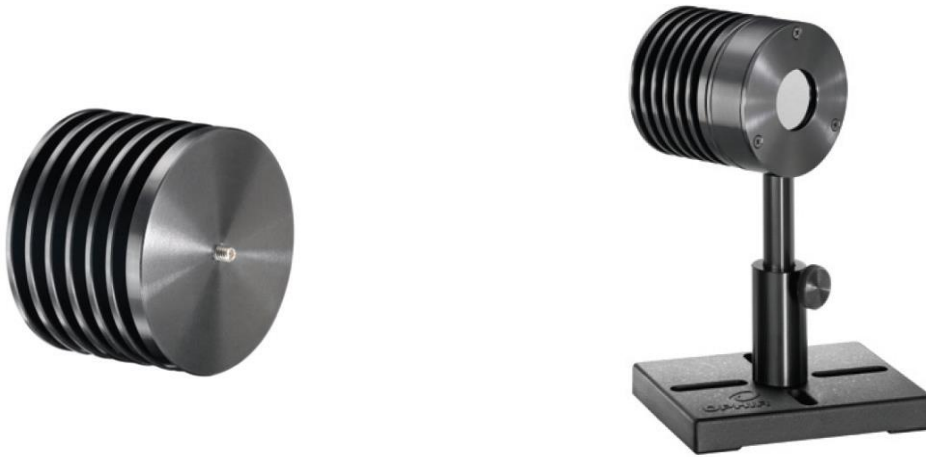


## User Notes for Pyroelectric Sensor Heat Sink (P/N 7Z08267)



The pyroelectric sensor heat sink is designed to be fastened to the rear of PE25 and PE50 series sensors and allows the sensors to work up to higher powers without overheating. The package consists of the heat sink and a graphite thermal pad to be placed over the screw thread of the heat sink when it is fastened to the sensor so as to make good thermal contact between the sensor and the heat sink.

### Assembly

- a. Place the heat sink on a surface with the fastening screw facing upwards.
- b. Place the graphite pad over the protruding thread on the heat sink. With the heat sink still facing upwards, screw the heat sink onto the rear of the sensor and tighten it well so the pad will make good thermal contact between the sensor and the heat sink. Do this carefully since the graphite pad is rather delicate and breaks easily.

Note: Once it is fastened, it is not recommended to remove the heat sink again since the pad will probably tear and may be unusable. If you want to order another thermal pad it can be done as per the part number below.

Description	Part Number
Graphite thermal pad for PE sensors	7F02074

Copyright © 2023 by MKS Instruments, Inc.  
 All rights reserved. No part of this work may be reproduced or transmitted in any form or by any means, electronic or mechanical, including photocopying and recording, or by any information storage or retrieval system, except as may be expressly permitted in writing by MKS Instruments, Inc. mksinst™ is a trademark of MKS Instruments, Inc.

Document No sp1 User Notes for Heat Sink for PE sensors 7Z08267 Rev 02 26 Sep 2023

For latest version, please visit our website: [www.ophiropt.com](http://www.ophiropt.com)