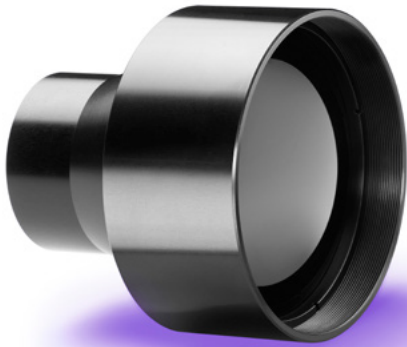
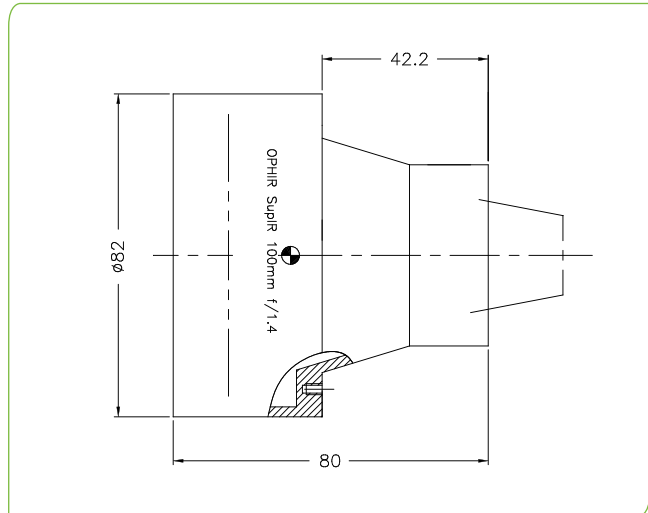


SupIR 100mm f/1.4, Fixed Focus 65148

TYPICAL ICD*



**HD
FORMAT**



LWIR | 1-FOV

HFOV	320x240	384x288	640x480	1024x768	1280x1024
17μ	3.1°	3.7°	6.2°	9.8°	
12μ	2.2°	2.6°	4.4°	7.0°	8.7°

Property	Value				
Optical					
Focal Length	100mm				
F#	1.4				
Average transmission (8-12μm)	88% (HC)				
Back Focal Length	30.25mm in air				
Mechanical					
Focus Mechanism	Fixed focus				
Depth of Field	470m to infinity				
Focus Range	5.5m to infinity				
Weight	260gr				
Max. Dimensions	Ø82mm x 80mm				
Environmental					
Operation Temperature	-30°C to +85°C				
Storage Temperature	-40°C to +85°C				
Sealing	IP 67 front element only				
Configurations	Weight (gr)	Dimensions	BWD**	Thread	Coating
65148-02	260	Ø82mm x 80mm	18.95	4x #4-40 UNC	HC

* The ICD drawing provided here is primarily a representation and may not accurately reflect the product's actual dimensions and specifications. For precise integration specifications contact your local sales representative.

** The BWD value is calculated for a unique detector setup with varying sealing windows in terms of thickness and material. For more details, contact your local sales representative.