

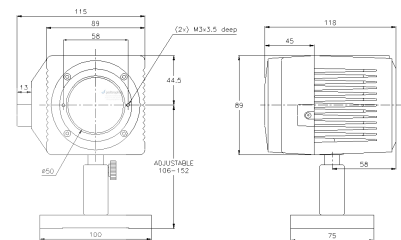
# FL300A

CW & Average Power Measurements 200mW – 300W 50mJ to 300J

Recommended Use: General purpose to 300W  
Special Features: Fan cooled, large aperture

|                                       |                                      |
|---------------------------------------|--------------------------------------|
| Absorber:                             | Broadband, 0.19-20 $\mu$ m           |
| Aperture:                             | $\phi$ 50mm                          |
| Digital Power Scales:                 | 300W/30W                             |
| Maximum Average Power Density:        | 9KW/cm <sup>2</sup>                  |
| Power Noise Level:                    | 10mW                                 |
| Power Accuracy:                       | $\pm$ 3%                             |
| Response Time with Display (0 – 95%): | 2.5s                                 |
| Linearity with Power:                 | $\pm$ 2%                             |
| Energy Scales:                        | 300J/30J/3J                          |
| Energy Threshold:                     | 50mJ                                 |
| Surface Uniformity                    | $\pm$ 2% over central 70% of surface |
| Cooling:                              | Fan                                  |

FL300A



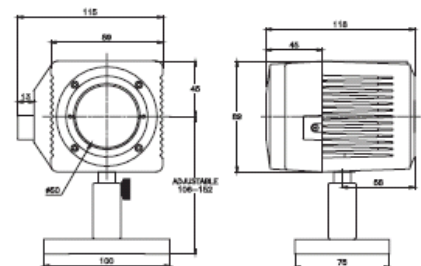
# FL300A-LP

CW & Average Power Measurements 200mW – 300W 50mJ to 300J

Recommended Use: High power and long pulse lasers  
Special Features: High power density and high pulse energy density

|   |                          |
|---|--------------------------|
| Absorber:   | LP 0.4-1.5, 10.6 $\mu$ m |
| Aperture:   | $\phi$ 50mm              |
| Digital Power Scales:                                   | 300W/30W                 |
| Maximum Average Power:                                  | 300W                     |
| Maximum Average Power Density:                          | 10KW/cm <sup>2</sup>     |
| Power Noise Level:                                      | 10mW                     |
| Power Accuracy:   | $\pm$ 3%                 |
| Response Time with Display (0 – 95%):                   | 2.5s                     |
| Linearity with Power:                                   | $\pm$ 2%                 |
| Energy Scales:  | 300J/30J/3J              |
| Energy Threshold:                                       | 50mJ                     |
| Maximum Energy Density J/cm <sup>2</sup> at Full Power: |                          |
| <100ns  | 0.05                     |
| 0.5ms   | 20                       |
| 2ms   | 50                       |
| 10ms  | 150                      |
| Cooling:  | Fan                      |

FL300A-LP



| Ordering information |  |                          |
|----------------------|--|--------------------------|
| Item                 | Description  | Ophir P/N                |
| FL300A               | Large aperture fan cooled 300W power/energy meter                                  | 1Z02627 / 7Z02627 (RoHS) |
| FL300A-LP            | Large aperture fan cooled 300W power/energy meter with damage resistant LP coating | 1Z02635 / 7Z02635 (RoHS) |

Rev11/spc/25.11.08/eg

Visit our website: [WWW.OPHIROPT.COM](http://WWW.OPHIROPT.COM)

